







LIMIT DEVICE SETTING.

G

1 5 sec. SET

2 DOWN

3 1 sec. OK

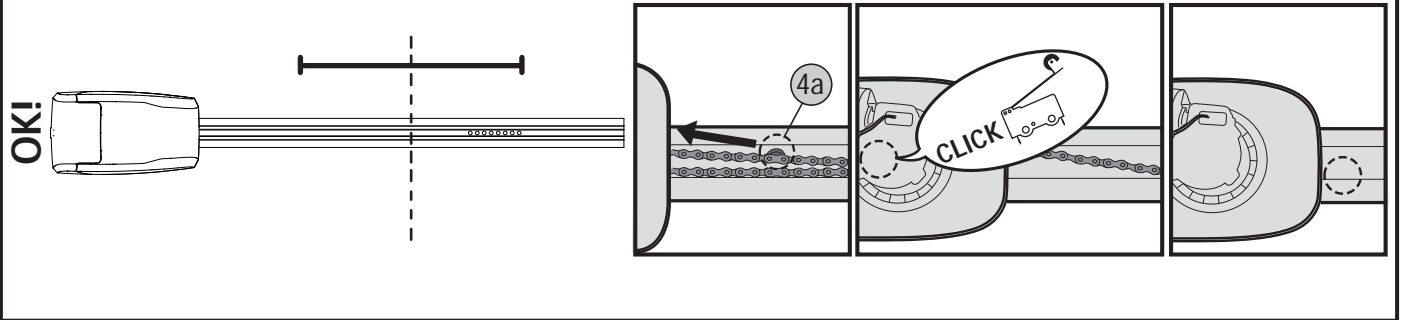
4 UP 1 sec. SET

5 1 sec. OK

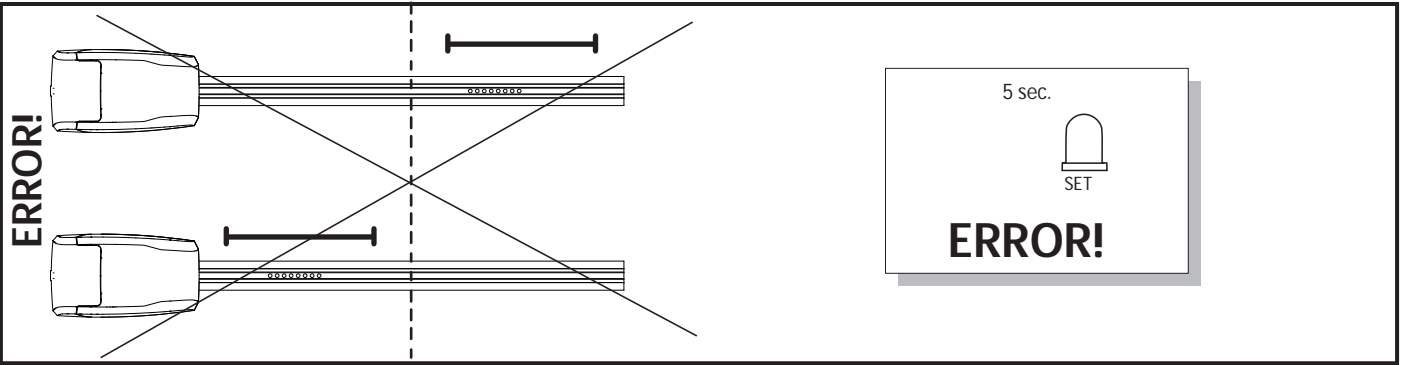
CLOSING

OPENING

OK!



ERROR!



OPENING / CLOSING TORQUE AUTOSETTING.

H

1 5 sec. SET

2 SET

3 SET

4 SET

SWC

AUTO OPEN

SWO

AUTO CLOSE















